

Honoring our forebears and our history. Using the arts to resurrect our culture of "Water and Land".
This is Niigata, a city designated by government ordinance on the sea of Japan Coast.

Most of the water and soil was brought to this land by the two great rivers,
the Shinano and the Agano.
After the hard battle with the water and soil, the City of Niigata was born.

Niigata Water and Land Art Festival 2009.

NIIGATA City, Ja.p.a.n

Works of art to awaken
the memory of "Water",
the smell of "Land".

One-quarter of the land in Niigata City is still under sea level.
Artists from home and abroad will display artwork at multiple locations in
honor of Niigata's Water and Land.

Government-ordinance-designated city on the Sea of Japan Coast

NIIGATA



水と土の芸術祭

Niigata Water and Land Art Festival

Sat. July 18th, 2009 → Sun. Dec. 27th, 2009

Locations ◯ Throughout City Area 726km²

Disused treasures lying at homes and communities will be displayed to summon
the memories of "Water" and the smell of "Land"
for thousands of years.

Art project—Creating monumental artwork by visiting artists.

Community Appeal—Presenting the fascination of Niigata's culture of food, traditional arts
and festivals.

Rediscovering history—Offering a new understanding of the effects of "Water" and "Land"
on human history and artwork.

Water and Land Art Festival Committee

<http://www.mizu-tsuchi.jp>

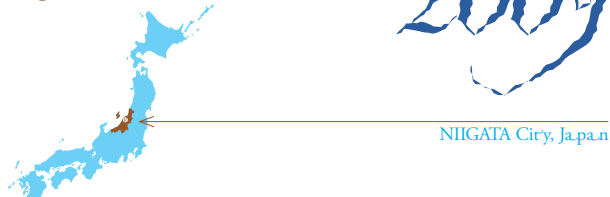
Enjoy "the culture of Water and Land" representing all these distinctive
features of Niigata - lagoons, river ports, willow trees, and wealthy farmers and
merchants.

Inquiry: Water and Land Art Festival Committee Secretariat
(at Exchange Promotion Division of Niigata City office)
1-602-1, Gakkocho-dori, Chuo-ku, Niigata city, Niigata 951-8550

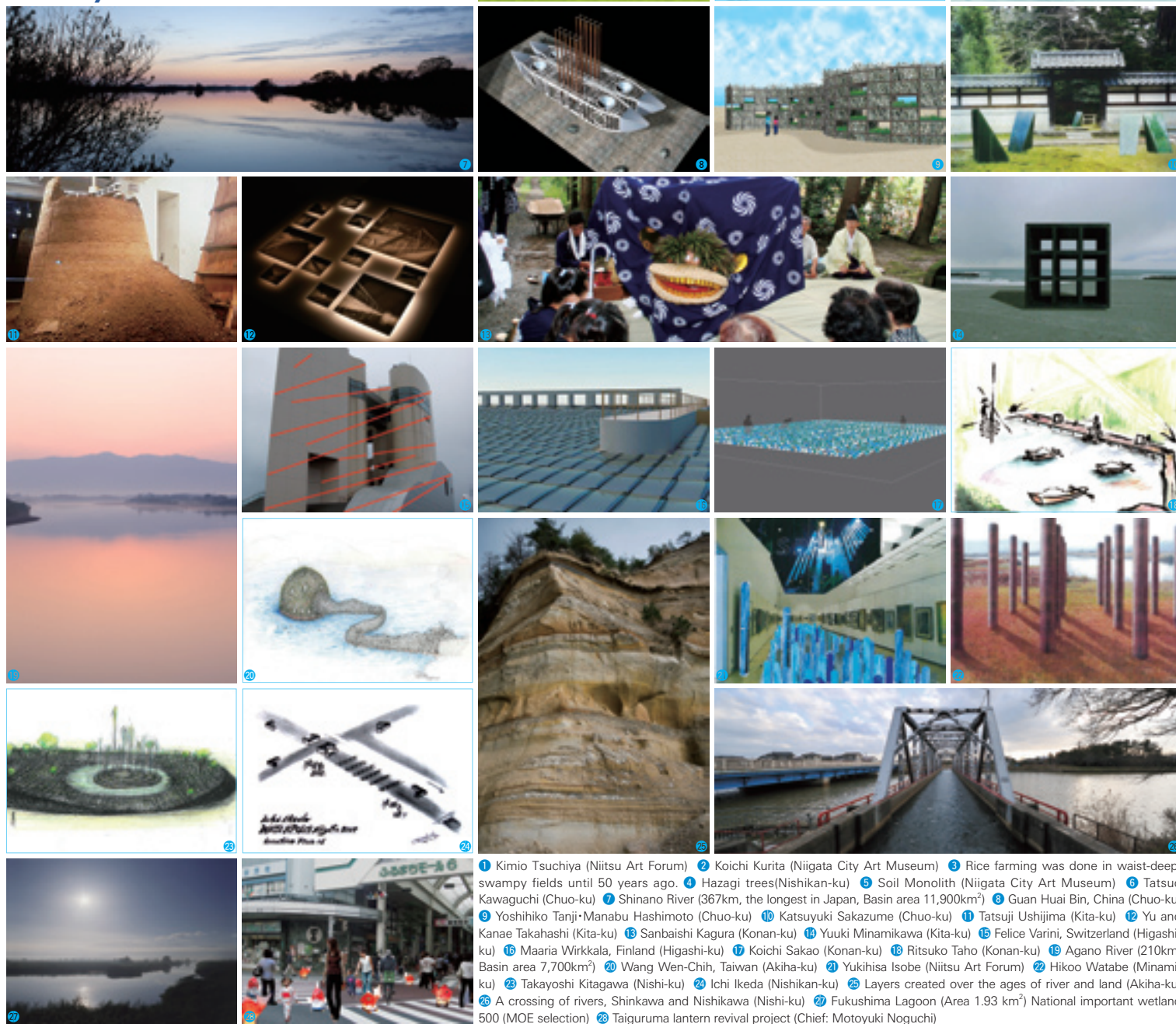
Government-ordinance-designated city on the Sea of Japan Coast NIIGATA

水と土の芸術祭

Niigata Water and Land Art Festival 2009



Sat. July 18th, 2009 → Sun. Dec. 27th, 2009



1 Kimio Tsuchiya (Niitsu Art Forum) 2 Koichi Kurita (Niigata City Art Museum) 3 Rice farming was done in waist-deep, swampy fields until 50 years ago. 4 Hazagi trees(Nishikan-ku) 5 Soil Monolith (Niigata City Art Museum) 6 Tatsuo Kawaguchi (Chuo-ku) 7 Shinano River (367km, the longest in Japan, Basin area 11,900km²) 8 Guan Huai Bin, China (Chuo-ku) 9 Yoshihiko Tanji·Manabu Hashimoto (Chuo-ku) 10 Katsuyuki Sakazume (Chuo-ku) 11 Tatsuji Ushijima (Kita-ku) 12 Yu and Kanae Takahashi (Kita-ku) 13 Sanbaishi Kagura (Konan-ku) 14 Yuuki Minamikawa (Kita-ku) 15 Felice Varini, Switzerland (Higashi-ku) 16 Maarja Wirkkala, Finland (Higashi-ku) 17 Koichi Sakao (Konan-ku) 18 Ritsuko Taho (Konan-ku) 19 Agano River (210km, Basin area 7,700km²) 20 Wang Wen-Chih, Taiwan (Akiha-ku) 21 Yukihiisa Isobe (Niitsu Art Forum) 22 Hikoo Watabe (Minami-ku) 23 Takayoshi Kitagawa (Nishi-ku) 24 Ichi Ikeda (Nishikan-ku) 25 Layers created over the ages of river and land (Akiha-ku) 26 A crossing of rivers, Shinkawa and Nishikawa (Nishi-ku) 27 Fukushima Lagoon (Area 1.93 km²) National important wetland 500 (MOE selection) 28 Taiguruma lantern revival project (Chief: Motoyuki Noguchi)

Admission Pass Fees
Adult ¥2,500 (¥2,000 in Advance) **College Student / Over 65 ¥2,000** (¥1,500 in Advance) **Elementary, Junior High and High school Student ¥800** (¥500 in Advance)

Organizer: **Water and Land Art Festival Committee Secretariat**
 Chairman: **Akira Shinoda** (Mayor of Niigata City)
 Director: **Fram Kitagawa** (Art Director / Art Planning Supervisor of Niigata City)

Inquiry:
Water and Land Art Festival Committee Secretariat (at Exchange Promotion Division of Niigata City office)
 1-602-1,Gakkocho-dori, Chuo-ku,Niigata city, Niigata 951-8550)
 : Citizen Supporters Staff Office " Mizucchi Tank"
 2-4-3 Kamedasuido-cho Konan-ku Niigata-city, Niigata 950-0123
 TEL.025-384-0926/ FAX.025-384-0927/ E-mail:tank@mizu-tsuchi.jp

Access to Niigata

[From Tokyo]
 By **Japan Railway (JR)** : Joetsu Shinkansen/ Tokyo → Niigata (Approx. 2hrs)
 By **Car**: Kanetsu Expwvy, Hokuriku Expwvy/ Nerima IC → Nagaoka JCT → Niigata-nishi IC (Approx. 300km, 3hrs 40min.)

[From Osaka]
 By **Air (Itami airport)** : JAL,ANA,JAC (8-10 flights a day, Approx.1hr 5min.)
 By **Japan Railway (JR)** : Tokaido and Joetsu Shinkansen /Osaka → Tokyo (TRA) → Niigata (Approx. 5hrs)
 By **Car**: Meishin Expwvy, Hokuriku Expwvy / Suita IC → Niigata-nishi IC (Approx. 580km, 7hrs)

 **Water and Land Art Festival**

<http://www.mizu-tsuchi.jp>